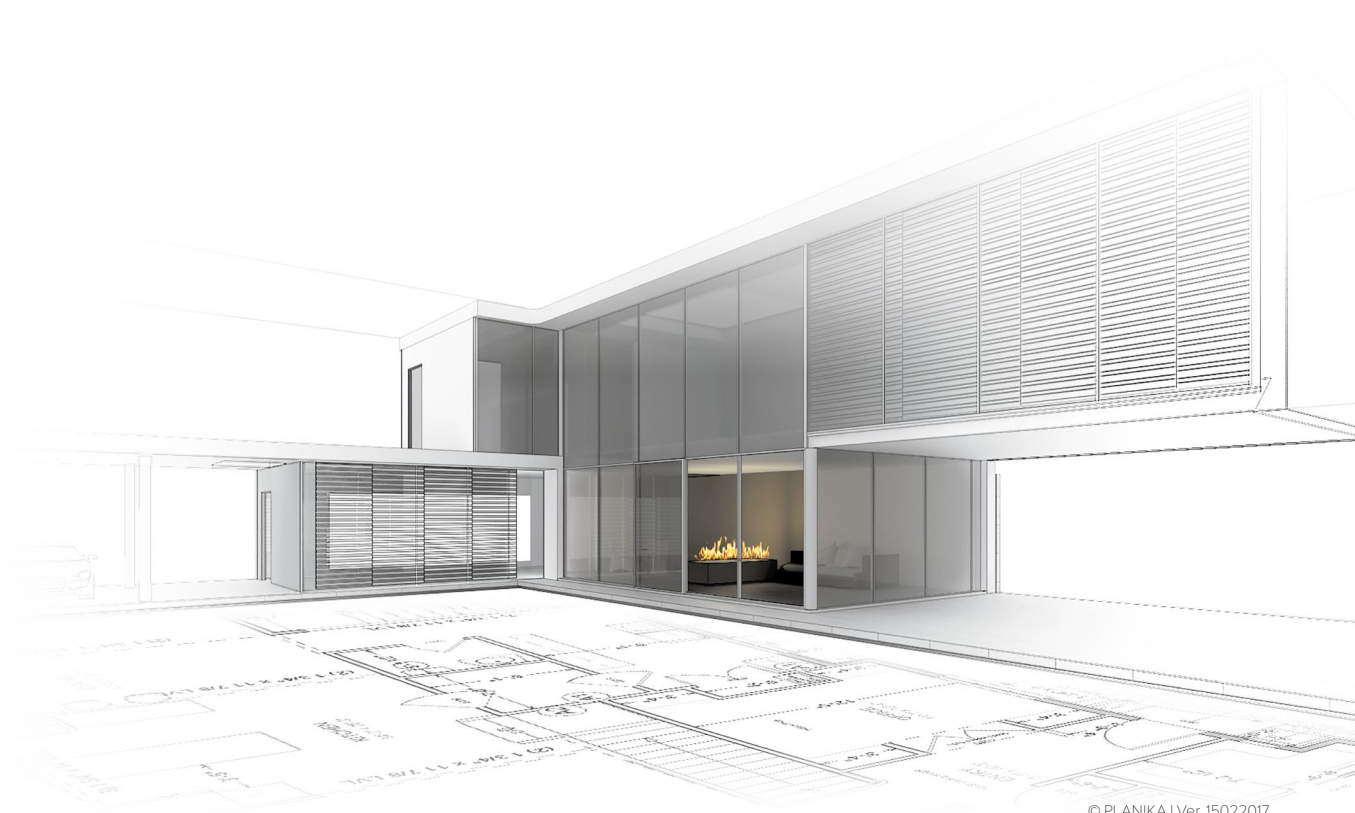


# PushButtonFireplaces

intelligent fire



© PLANIKA | Ver. 15022017

# PrimeFire PushButtonFireplaces

## PrimeFire

*Fire technology with an easy assembly  
Real fire at the push of a button*

### FEATURES:

- BEV\* Technology
- No smell / no ash / no smoke
- Optional remote control
- Advanced safety sensors
- Automatic shutdown in case of errors
- Child Lock
- Advanced microprocessor
- Diode display
- Control panel
- Intuitive control
- 2 levels of flame height
- Easy installation
- Possibility of joining modules
- No additional installation
- No additional ventilation required
- No chimney required
- Electrical connection required
- For indoor use
- Eco-friendly
- Automatic fuel pump
- TÜV Certified

\* BEV Technology – A patented process resulting in the clean burning of bio-ethanol fuel vapours.

### TECHNICAL DATA:

**Capacity:** 2,75 L / [US] 0,7 gal / [UK] 0,6 gal

**Burning time:** ~5 h

**Heat output:** 4,0 kW / 13648 BTU

**Net weight:** 13 kg / 29 lbs

**Air circulation:** min. 1/h

**Minimum room size:**  
please contact our Project Department for details

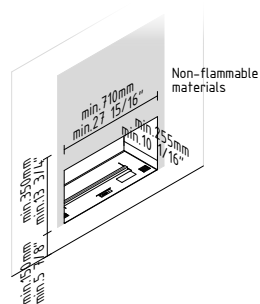
**Power supply:** 230 V / 115 V

**Finish:**

TOP: black powder coated steel,

CASING: galvanized steel

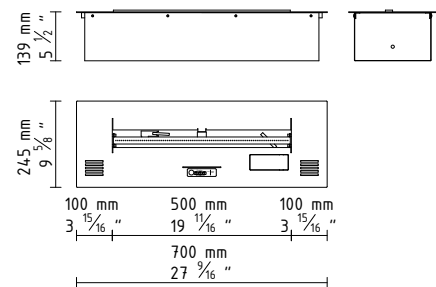
### INSTALLATION:



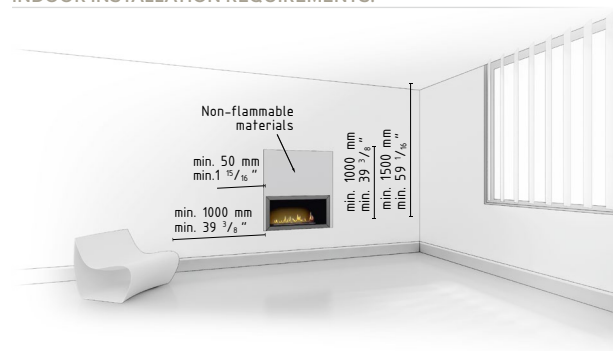
www.PLANIKAfires.com



### DIMENSIONS:



### INDOOR INSTALLATION REQUIREMENTS:



download **PRODUCT INSTRUCTION**

